

# Annual Report

# 2025



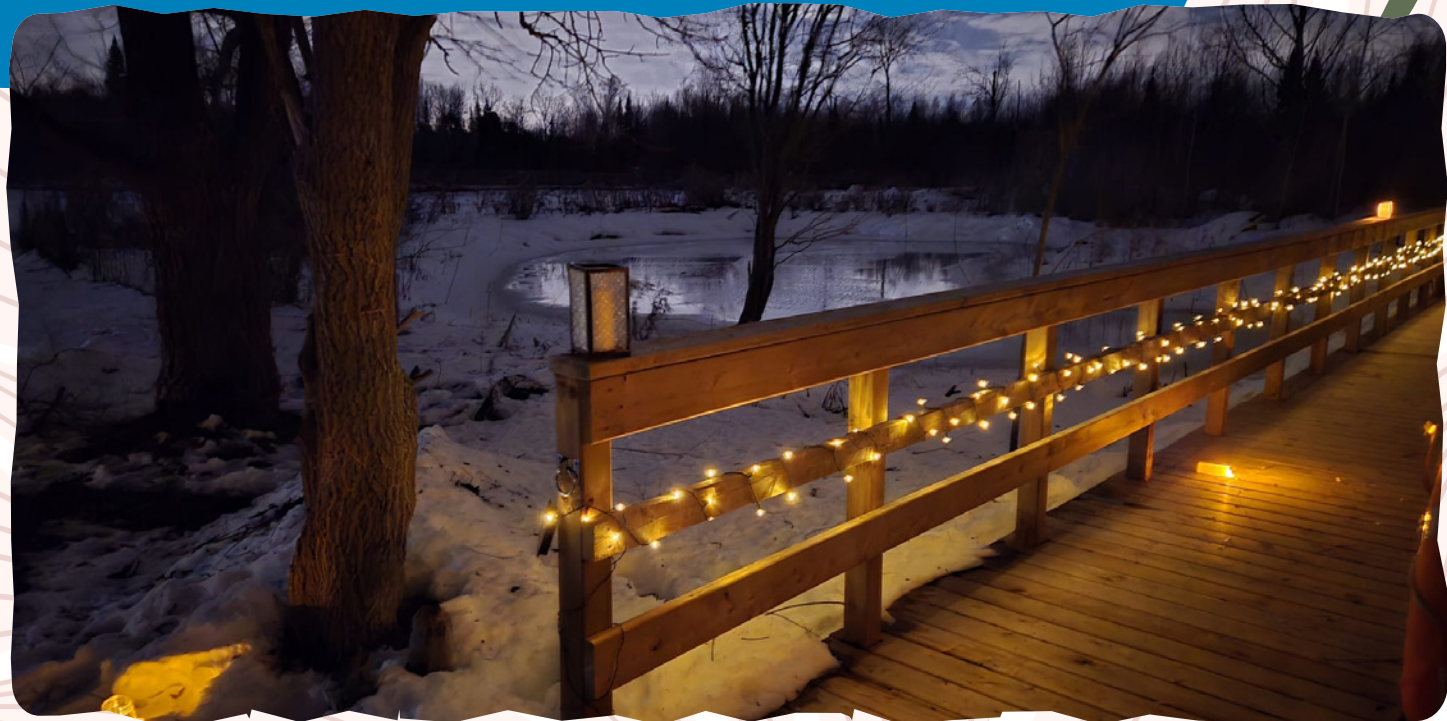
Trusted by families for over 39 years

Growing in response to the needs of our community and our government.

**YORK** *Care & Education*  
**PROFESSIONAL**

# Contents

Vision, Mission and Values .....	3
CEO Message .....	4
Who We Are .....	5
Board of Directors .....	6
Year in Review and Year Ahead .....	7
Children and Families Served / Human Resources .....	10
Strategic Priorities .....	12
Operational & Financial .....	13
Outdoor Initiatives .....	16
Programs at York Professional Care and Education .....	18
Cultural Celebrations .....	20
Program Locations (Map) .....	21
Program Locations .....	22



## Our Vision

We support children to recognize and develop their potential, demonstrate good values, make positive contributions to an inclusive society while experiencing learning through connecting to the land.

## Our Mission

Leaders in innovative childcare and outdoor learning.

## Core Values

We value learning environments that focus on:

- Each child as an individual;
- The “natural world” that physically serves as a third teacher;
- An emotional atmosphere that is safe, inclusive, accepting, and nurturing;
- A social culture that encourages and promotes character qualities such as courtesy, respect, responsibility, integrity and kindness;
- Collaborative relationships between families and educator teams support respectful and open communication; and
- Professional relationships that engage family values while honouring confidentiality.



# A Message From Our CEO

## Ordinary People Doing Extraordinary Things

As Thirty-nine years ago, our founder, Pat Henry, brought her vision to life by creating an innovative organization dedicated to supporting parents, communities, school boards, and all levels of government. Founded in the spring of 1986 as York Professional Day Care, the organization evolved into York Professional Care and Education in 1997. Pat played an instrumental role in growing the organization from its early beginnings until her retirement in 2014.

Although we sadly lost Pat in 2025, her vision and passion continue to guide us. Her influence remains deeply woven into every aspect of YPCE, and her legacy grows stronger with each passing year.

Another remarkable leader in YPCE's history, Jean Smalley Vanden Brink, stepped down from her role as President of the Board in 2025 to enjoy a well-deserved retirement. We are deeply grateful for her years of leadership and dedication. At the same time, we were honoured to welcome board member Lesley Loveless, a former elementary school teacher with more than twenty years of experience, as our new Board President.

I am also pleased to announce the appointments of Nicole Murphy as Treasurer and Heidi Bonner as Vice President of the Board. On behalf of our board members, executive team, educators, and staff, I extend my sincere thanks to each of you. Your leadership and commitment will help guide YPCE as we continue to grow and thrive into the future.

As we reflect on our future, I trust you share my enthusiasm for continuing the innovative and creative programming that ensures York Professional Care and Education remains a leader across York Region and Simcoe County in outdoor education, child care, before- and after-school programs, summer camps, and forest school experiences.

Never stop learning, and never stop caring. Together, we bring the dream to life.

Thank you to all of our staff and educators for making 2025 our best year yet – and I look forward to an even brighter year ahead.

**Shirley Black**  
Chief Executive Officer

**Lesley Loveless**  
President, Board of Directors

York Professional Care & Education



# Who We Are

## Head Office Employees

**Shirley Black**, NNEB, RECE  
Chief Executive Officer

**Roger Singh**  
Manager of Operations

**Gary Miranda**  
Operations Coordinator

**Kelly Fraccaro**, RECE, AECEO.C  
Program Manager  
Home Child Care Consultant

**Sonia Quattrociochi**, RECE  
Program Manager

**Sacha Del Biondi**, RECE  
Policy and Compliance Advisor

**Sandra Amador**, RECE  
Director of First Impressions

**Heather Boccia**, BA, CPA, CMA  
Director of Finance

**Romana Outhwaite**, B.Comm  
Accounts Receivables Administrator

**Deb Rauwerda**  
Payroll & Benefits Administrator

**Samina Chu**, CHRP  
Human Resources Co-Ordinator

**Vic Parsons**  
Revenue Support

**Emily Vance**, RECE  
Finance Administrator

**Robyn Harvey**, RECE  
Administrative Coordinator

## Program Supervisors

### Simcoe County

**Norheen Jaffrey**, RECE  
Baxter Central Kids' Club  
Cundles Heights Kids' Club  
New Lowell Central Kids' Club  
Our Lady of Grace Kids' Club

**Malinda Dupuis**, RECE  
Andrew Hunter Child Care Centre  
Steele Street Kids' Club

**Mariam Siewierski**, RECE,  
Forest and Nature School Practitioner  
Trillium Woods Child Care Centre

**Stefanie Almeida**, RECE  
Hewitt's Creek Child Care Centre  
Mapleview Heights Kids' Club

### York Region

**Ana Faria**, RECE,  
Forest and Nature School Practitioner  
Mount Albert Child Care Centre  
Mount Albert Kids' Club

**Celia Vitoria**, RECE  
St. Joseph's Child Care Centre

**Christina Diamante**, RECE  
Robert Munsch Kids' Club

**Leslie Smith**, RECE  
German Mills Child Care Centre  
Markham Gateway Kids' Club

**Lindy Ness**, RECE,  
Forest and Nature School Practitioner  
Aurora Grove Kids' Club  
Northern Lights Kids' Club  
Regency Acres Kids' Club  
St. Joseph's Kids' Club

**Karrie Asselstine**, RECE,  
Forest and Nature School Practitioner  
Holland Landing Child Care Centre  
Park Avenue Kids' Club

**Nasira Khan**, RECE  
Sixteenth Avenue Child Care Centre  
Henderson Avenue Kids' Club

**Phyllis Stojcevski**, RECE  
Our Lady of Good Counsel Child Care Centre

**Nikole Chrysler**, RECE,  
Forest and Nature School Practitioner  
Whispering Pines Child Care Centre

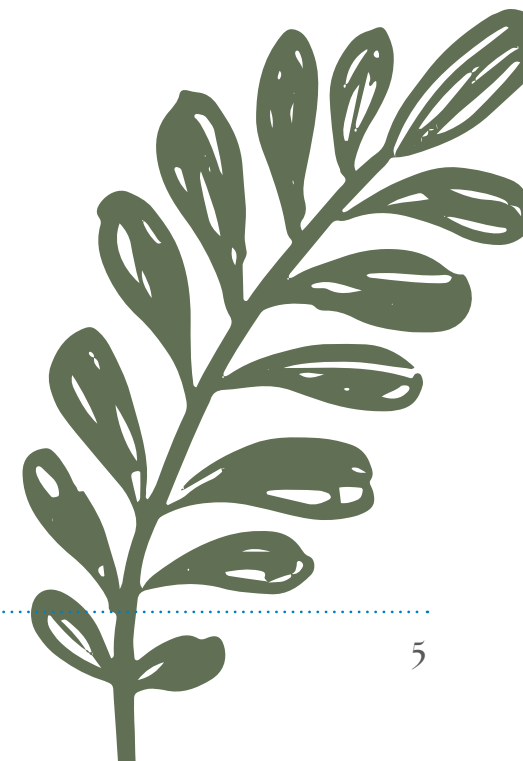
**Vittoria Rotiroti**, RECE,  
Forest and Nature School Practitioner  
Lester B. Pearson Child Care Centre  
Robert Munsch Kids' Club

**Sheila Radder**, RECE  
R.L. Graham Child Care Centre  
Lakeside Kids' Club

## Camp Programs and Outdoor Education

**Colleen Pakkidis**, BA RECE,  
Forest and Nature School Practitioner  
Adventure Camp Director  
Outdoor Education Co-Ordinator

**Keegan Kesteloot**, HBOR  
Hidden Bay Leadership Camp Director



# Board of Directors



## President

**Lesley Loveless**  
B.A.Sc., B.A Ed.

With a major in Child Studies, her credentials include an Early Childhood Education equivalent. Lesley has taught various age groups in childcare and has been an elementary school teacher with York Region District School Board for 28 years. Lesley was elected to the Board in 2015.



## Vice President

**Heidi Bonner**  
BMus

With over 25 years of experience in non-profit healthcare, Heidi holds the Gold Medal Recipient in Bachelor of Music Therapy from Wilfrid Laurier University. Heidi has a wide background in fundraising, public relations, communications and education facilitation.



## Secretary *Ex-officio*

**Heather Boccia**  
BA, CPA, CMA

Heather is a Chartered Professional Accountant, Certified Management Accountant and has worked with the agency for over 30 years. Heather holds a Bachelor of Arts degree with a major in Commerce from the University of Toronto and is certified in Not for Profit and Charity Finance Leadership.



## Treasurer

**Nicole Murphy**  
CPA, CA

Nicole has an extensive background in the not-for-profit sector, including more than 25 years at the Senior Management level. Nicole has three children, which had all previously attended YPCE programs. She is a Chartered Professional Accountant with over 20 years at Pickering College and is the Assistant Head of School, Finance & Operations.



**Michael J. Pearson**  
B.Ed.

Michael's career with children began as an educator with York Professional Care & Education. Michael was a Registered Early Childhood Educator and an assistant lead during his time at YPCE. He received his Bachelor of Education from York University in 2000 and is a teacher with YRDSB. Michael is bilingual in French and English and is the coordinator of the Gender Sexual Alliance (G.S.A.) Group.



**Lynda Carusi**  
ECE

Lynda is passionate about childcare and began her career at York Professional Care & Education as a preschool and nursery educator. After receiving her diploma from St. Lawrence College in Early Childhood Education, she continued working as a school age lead and Supervisor Designate at the before and after program at Park Ave. Lynda retired in 2018 and while at YPCE, received her 20-year service ring.

# 2025 in Review

## Over the past year we:

- Celebrated Jean Smalley Van den Brinks retirement after almost 40 years of service to York Professional Care & Education as a board member and ultimately our Board of Directors Chair for many years. We are excited to welcome Lesley Loveless as the new President of the Board of Directors, as well Heidi Bonner has stepped in to the Vice President role. Nicole Murphy will take over as the Treasurer.
- Began playground development at our newest childcare site – Whispering Pines Child Care Centre's outdoor space was separated into a toddler and preschool outdoor space, as well covered sandboxes were added to each playground.
- Connected into the neighbourhood at Whispering Pines, as the preschool children worked in a community garden to grow their own vegetables in the summer of 2025.
- Continued to develop the Agency's Strategic Priorities with an emphasis on incorporating the DIG method of Drive Governance Excellence, Inspire Educators, Staff and Volunteers and Grow and Expand our Impact.
- Hosted our 11th annual Family Engagement Day on April 6th, 2025, with over 900 attendees.
- Continued to invest in our educator's and management professional learning with training on:
  1. First Aid and CPR
  2. Food Handler Training
  3. Forest and Nature School Practitioner Course
  4. Waterfront training and Indigenous knowledge workshop for our supervisors
  5. Behaviour Management System
  6. York Professional Care and Education's annual training on outdoor education and School-age training.
- Continued to host Food Handling and First Aid & CPR to provide in house training to our employees with Agency Certified Trainers.
- Continued to treat for invasive Phragmites at Adventure Camp, ensuring the ponds will be accessible for programs and protecting the ecology of the water.
- Offered our 1st wetland programs at Adventure Camp and Outdoor Education Centre. The new boardwalk over the pond, with a raised deck for viewing has offered new learning experiences and made the pond easily accessible for pond studies.

● Expanded Indigenous learning to our School-age training in summer of 2025. The new YPCE educators were welcomed to our land in Mount Albert on their first day of training with a land acknowledgement and smudging ceremony.



● We were overjoyed with a wonderful surprise on July 22, 2025: the birth of a new lamb, and we are excited to announce his name... Aki! In the Anishinaabe language, Aki means The Land, a perfect reflection of where this little one was born. Surrounded by the joy and laughter of children, we welcomed Aki to Adventure Camp with open arms. His mom, Kona, stood proudly by his side throughout the celebration, adding to the beauty of the moment.

● Commissioned Canadian artist, Andrea Macleod, who brought vibrant colours to the YPCE Outdoor Education Centre at Adventure Camp with a new mural. The artwork features three of the Seven Sacred Teachings animals: the eagle, wolf, and turtle. Each animal represents important values—such as love, community, cooperation, and patience—and together they reflect a deep connection to the land and Indigenous teachings.

- Offered drumming workshops at our Exploration camp location in summer of 2025 for the second summer running. This program is facilitated outdoors combining the benefits of drumming to our brains and the calming effect of nature.

- Recognized and celebrated special event days including: Pink Shirt Day in recognition of Anti-Bullying Day, Earth Day, Orange Shirt Day - National Day for Truth and Reconciliation, Remembrance Day, Family Literacy Day, International Mud Day and Take Me Outside Day.

- Celebrated our 4th annual Winter Solstice event with our families and the community at our Outdoor Education Centre in Mount Albert.

- Continued to participate in the traditional Holiday Parades and unique town gatherings and events over the Winter Holiday Season.

- Collected 1,356 lbs of food and personal care items during the Agency Holiday Drive donated to Aurora Food Pantry.

- Hosted our 7th annual Holiday Celebration for staff presenting 20 rings to employees celebrating 5 to 20 years of service and presented 106 Professional Development plaques.

- Hosted our 8th annual Job Fair, as well as participating in community college employment fairs in York Region, Simcoe County and City of Toronto.

- Began the Secondary Education Scholarship Program at York Professional Care & Education. For the 2024-2025 school year there were 6 recipients and a total of 14 since the inception of the program.

- Welcomed Finance Administrator Emily Vance to Head Office.

- Welcomed a new Operations Coordinator at Head Office - Gary Miranda

- Transitioned to a new software system on April 1, 2025.



2025 Annual Walk for SickKids Foundation Raised...

**\$8,010**

The total donations since 2003 - **\$180,890.28**



# The Year Ahead 2026



## In anticipation of an amazing 2026, we will:

- CELEBRATE our 40th anniversary! York Professional Care & Education is celebrating FOUR decades of inspiring, quality care and education! From our humble beginnings to becoming a leader in nurturing young minds in the outdoors, we've grown thanks to our incredible educators, families, and communities. Over the anniversary year the celebrations will continue at each YPCE event we host and a dedicated day on June 16, 2026, where all children, families and educators at each site will have the opportunity to celebrate together.

- Say goodbye to Christina Bossart (Stitch) - After 10 incredible years with YPCE, Stitch, Camp Director of Hidden Bay Leadership, will embark on a new adventure.

- Welcome Keegan Kesteloot for his first summer as the new Camp Director for Hidden Bay Leadership Camp. Coming from a background in Child & Youth Care and Outdoor Recreation, he brings more than a decade of experience in summer camps, outdoor education and behavioural support.

- Send a team of supervisors and management to New Zealand on a study tour. New Zealand is known for their world-renowned curriculum that also incorporates the indigenous heritage of the Māori.

- Begin forging a new relationship Jason Donio who is an Indigenous Cultural Liaison with the Toronto Catholic District School Board. We look forward to this partnership, educating us in the understandings of Indigenous teachings.

- Begin SunSense training developed by the Canadian Cancer Society that will be implemented across all YPCE programs.

- Expand our Forest School Fridays from a half day program to a full day in nature.

- Facilitate our 12th Family Engagement Day for Children and Families held at Outdoor Education Centre.

- Continue to support educators to enroll and complete Forest School Practitioner training. Training began in 2017. By the end of 2026 we anticipate 21 Forest School Practitioners that will support the York Professional Care & Education vision and mission by connecting learning to the land.

- Facilitate our 23rd annual walk, in support of the Hospital for Sick Children that will take place in May of 2026.

- Host the York Professional Care & Education 12th annual Job Fair.

- Host the Annual Meeting of the Members will be facilitated in June of 2026.

- Be expanding our team of travelling RECE educators. These positions over the last two years have greatly supported the stability and program quality of all our childcare sites. Two more educators will join to make a team of six travelling RECEs over the next year.

- Commence many site renovations such as flooring, cupboards, bathrooms and painting.



# Children & Families Served

2018	2022	2023	2024	2025	
3129	3953	4020	4298	4541	Children Served in all YPCE Programs
2390	2965	2814	3025	2367	Number of Families Served in all YPCE Programs
452	833	616*	706	784	Full Day Children Served at YPCE Children's Academy *CWELCC Has Provided Stability
1734	1870	2123	1910	2197	Before and After Children Served in YPCE Programs
No Data	161	79	46	118	YPCE's Nature Connection Program and Forest School Fridays
178	267	281	299	400	Children at Adventure Camp
223	228	249	244	283	Children at Hidden Bay
268	655	712	684	759	Children at Exploration Camp



# Human Resources

	2022	2023	2024	2025
<b>Total Employees</b>	310	314	421	442
<b>Full Time Positions</b>	117	136	310	308
<b>Full-Time Travelling RECEs</b>			4	4
<b>Supply Educators</b>	59	99	107	91
<b>New Hires</b>	109	152	150	119
<b>Inclusion/RISE</b>	27	25	35	31

# York Professional Care & Education's Strategic Priorities 2025-2030

## Setting the Standard for Comprehensive, Innovative and Quality Child Care

Our new strategic plan outlines three key focus areas: Drive Governance Excellence, Inspire Educators, Staff and volunteers and Grow and Expand our Impact. Through our work we encourage children to "DIG" into learning in all of our programs facilitated through a connection to the land. Our new plan will help us DIG into new and innovative ways of ensuring quality childcare and outdoor learning.

**Drive Governance Excellence...**  
**through leadership that supports a robust organization where people want to work, learn and volunteer.**

### Goals:

- Demonstrate excellence in governance practises
- Build the diversity of our board and volunteers
- Build the diversity of our board to better reflect the communities we serve

**Inspire our Educators, Staff & Volunteers...**  
**by continuing to foster a healthy organizational culture, where everyone feels a sense of belonging along with opportunities for professional and personal growth.**

### Goals:

- Innovate program and service delivery
- Demonstrate excellence in talent retention and recruitment
- Build the diversity of our teams to better reflect the communities we serve

**Grow and Expand our Impact...**  
**by securing resources needed to support YPCE activities now and ignite change for the future.**

### Goals:

- Create fiscal resiliency
- Advance operational best practises



# Operational & Financial

York Professional Care & Education Inc. continued to demonstrate strong financial performance and stability in 2025.

Total revenues increased by 8% over 2024 to approximately \$19.5 million, while the organization maintained a healthy annual operating surplus and strong reserve balance. Salaries and benefits remain the largest expenditure at approximately 82% of the total expenditures.

The growing strong reserve balance supports future capital improvements, operational stability and contingency planning.

## Sector Challenges and the Canada-Wide Early Learning and Child Care Initiative (CWELCC)

The 2025 fiscal year continued to present operational and financial challenges across Ontario's child care sector as organizations worked to implement the new 2025 funding model for CWELCC. While the program has significantly improved affordability for families and increased demand for licensed child care spaces, service providers have also faced substantial implementation pressures being:

- Increased administrative work associated with funding calculations, reporting requirements and compliance obligations
- Ongoing uncertainty regarding long-term funding formulas and cost recovery for operators
- Pressures on operating margins as fee reductions limited the ability to offset rising costs through parent fees.
- Significant recruitment and retention challenges for qualified RECEs and support staff which impacts program capacity and service delivery
- Inflationary pressures affecting occupancy, food, insurance, utilities and program related expenditures.

Despite these sector-wide challenges, York Professional Care & Education maintained strong liquidity, healthy reserve balances and a positive operating surplus while continuing to invest in staffing, programming and future infrastructure needs. The strong restricted fund balances demonstrate prudent long-term financial planning and position the organization well for continued stability within an ever evolving Ontario Child Care funding environment.



# Statement of Operations

Revenue	2025	2024
Child Care Fees	\$8,887,546	\$9,048,183
Funding Grants	\$10,501,493	\$8,782,992
Other	\$153,137	\$118,299
<b>Total Revenue</b>	<b>\$19,542,176</b>	<b>\$17,949,474</b>
Expenditures	2025	2024
Salaries and Benefits	\$15,413,567	\$13,761,341
Provider Fees	\$110,483	\$122,780
Occupancy	\$1,093,417	\$1,024,294
Program and Food	\$1,355,826	\$1,407,913
Professional Development	\$173,428	\$172,075
Adminstration	\$400,127	\$452,351
<b>Total Expenditures</b>	<b>\$18,546,848</b>	<b>\$16,940,754</b>
<b>Excess of Revenues over Expenditures</b>	<b>\$995,328</b>	<b>\$1,008,720</b>

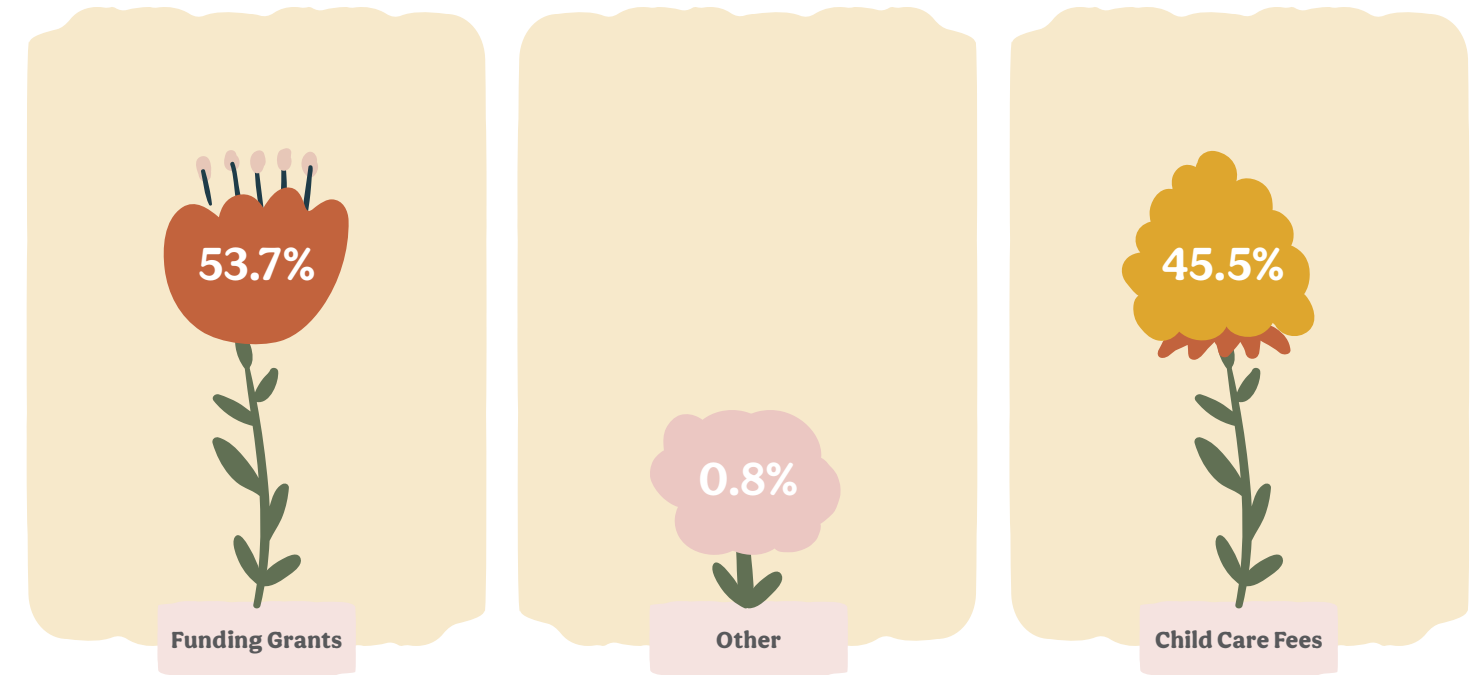
The figures for the above statement of operations has been extracted from the financial statements of York Professional Care and Education Inc. for the year ended December 31, 2025 upon which the Agency's auditors Foster Thibeault Youell Radley Professional Corporation, Chartered Professional Accountants have reported under the date of April 28, 2026.



# Revenue & Expenditures

## Revenue

(12 months ended December 2025)



## Expenditures

(12 months ended December 2025)



# Outdoor Programs and Summer Camp Initiatives



## Hidden Bay

The summer of 2025, Hidden Bay Leadership Camp was an unforgettable season of laughter, campfire stories, and lifelong memories. Welcoming campers aged 4 to 16 years from across Ontario, for both day camp and our unique residential program where children build character skills and new friendships while immersed in traditional camp experiences. Dragonboat excursions were a camper highlight this year.



We strive to ensure that camp is accessible to everyone through meaningful partnerships with the Wasauksing and Shawanaga First Nations, York Region, Parry Sound District Social Services, the Sudbury Manitoulin Children's Foundation, and Amici Children's Camping Charity.

Our incredible staff remain the heartbeat of the Hidden Bay experience. This year we welcomed five international team members from England, Ireland, and Scotland. Their presence offered campers a unique global perspective, blended with the classic traditions of a Canadian summer.

## Nature Connections (Ages 0-6 years with Caregivers)

Hosted at the YPCE Outdoor Education Centre

Nature Connections continues to provide a consistent, high-quality outdoor experience for young children and their caregivers. This weekly, play-based program supports early childhood development through immersive, sensory-rich engagement with the natural environment evolving with the seasons. In the fall, children explore changing leaves and how animals prepare for winter, alongside extended hikes and mud kitchen play. Winter sessions emphasize snow and ice exploration, as well as introductory tool use. In the spring, the program focuses on resilience and renewal, with activities including puddle play, observing plants and wildlife re-emergence. The program continues to strengthen caregiver-child relationships while fostering a sense of community and belonging. It remains a valued entry point for families seeking early years outdoor education.

## Forest School Fridays (Kindergarten Program)

Hosted at the YPCE Outdoor Education Centre

Forest School Fridays has continued to grow in its third year as a high demand alternative learning program for kindergarten-aged children. Serving a cohort of 15 participants, the program integrates outdoor, experiential learning following the Forest School philosophy.

Led by our team of certified Forest School Practitioners, the program emphasizes skill development, independence, and environmental stewardship. Children participated in a range of hands-on activities, including bush craft (shelter building and knot tying), tool use, introductory fire-lighting practices, and nature-based arts such as sewing and paper making.

Seasonal adaptations support year-round delivery. During winter months, programming is complemented using our traditional Mongolian yurt, providing a sheltered space while maintaining an outdoor learning focus.

Forest School Fridays demonstrates strong outcomes in confidence-building, problem-solving, and social collaboration, while offering a meaningful alternative to the traditional classroom settings.



## YPCE Outdoor Education Centre

*Nature-based Field Trips* (New Offering)

This year marked the first offering of our Nature-Based Field Trips as a new program stream, expanding access to outdoor learning for school groups. These visits are designed to align with curriculum objectives while emphasizing experiential, land-based forest school philosophy.

A notable highlight is the development and delivery of a program designed to support neurodivergent learners. The program emphasizes inclusive, sensory-aware outdoor experiences, enabling children to engage at their own pace while fostering confidence, connection, and overall well-being.

Initial feedback has been positive, indicating strong potential for growth in this area. Nature-Based Field Trips represent an important step toward increasing inclusivity and broadening the organization's impact on all young learners.

## Adventure Camp

Hosted at the YPCE Outdoor Education Centre

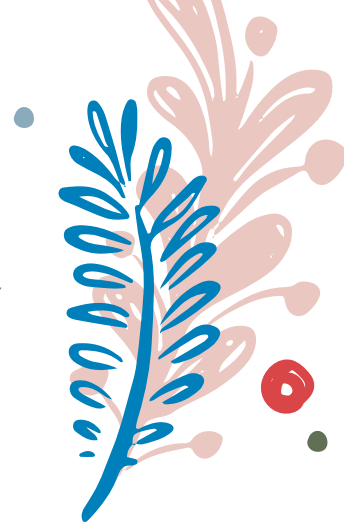
Adventure Camp delivered a dynamic and engaging outdoor experience in summer 2025, with strong participation and high energy across all age groups. Campers were immersed in nature through a wide range of activities, including guided hikes, scavenger hunts, wildlife observations, and nature-based arts. Daily programming emphasized both individual exploration and group collaboration. Camp-wide games and team challenges encouraged problem-solving, communication, and peer connection, contributing to a strong sense of community and belonging.

New in 2025, Adventure Camp introduced Indigenous programming, developed to deepen campers' understanding of the land and its history. These sessions included teachings on traditional ecological knowledge, storytelling, and land-based practices, supporting respect, awareness, and connection to Indigenous perspectives and the land.

In addition, a Leadership Program for senior campers was launched. Older participants were provided with opportunities to build confidence and responsibility through mentorship roles, team facilitation, and skill development in areas such as stewardship, problem-solving, and outdoor leadership. This initiative created a natural progression pathway within the camp experience.



# Programs at York Professional Care & Education



York Professional Care & Education views children as competent, capable, and rich in potential. Educators engage with children as co-learners, creating experiences that challenge children through play, support their interests, and encourage exploration of the natural world in all seasons. Collaborating with families, educators ensure every child receives an inclusive, barrier-free program, guided by the Four Foundations of How Does Learning Happen? – Belonging, Well-being, Engagement and Expression.

**Child Care Centres** – Our full-day child care programs are designed around children’s interests and inquiries, using emergent experiences to support their development. Children engage with loose parts and natural materials both indoors and outdoors, with a strong focus on exploring nearby natural spaces in ‘The Beyond’. This play-based approach allows for both independent and peer-supported exploration, with educators acting as facilitators and co-learners. We believe early exposure to nature fosters a lasting respect for the environment and inspires lifelong stewardship.

**Before & After School Programs** – Educators support school-aged children in becoming independent thinkers by facilitating experiences that promote choice and independence. In an informal environment, children socialize, explore their interests, and initiate activities. Programs offer a variety of materials for sports, games, projects, and skill-building. Outdoor learning is a key focus, encouraging exploration in all Canadian weather and fostering respect for nature and environmental stewardship.



**Licensed Home Child Care** – In a home care environment, Care Providers create spaces that encourage children to explore both indoors and outdoors. In small group settings, caregivers recognize individual and group needs, establishing daily routines that support young children’s development. In a natural home environment, Provider interactions offer a secure emotional relationship, while activities promote group and individual play.

**Exploration Camp** – On-site day camps; located at many of our community schools, offer fun outdoor-focused experiences. Weekly sessions allow campers to connect with friends and engage in activities including exploring nature, tool use, sports, creative projects, and off-site field trips. With a strong emphasis on outdoor learning, camp fosters respect for the environment and teaches children to care for the land.

**Adventure Camp** – Adventure Camp is an OCA-accredited day camp on 48 acres of farmland in Mount Albert offering children meaningful connections to the natural world. Full-day outdoor activities include farm club, swimming, pond exploration, tool use, gardening, archery, and more. These experiences set in the camp’s agricultural surroundings, inspire a deep appreciation for the environment. In small groups, counselors and campers build lasting relationships with each other and nature.

**Hidden Bay Leadership Camp** – Hidden Bay; an OCA-accredited overnight camp near Parry Sound, is nestled on Lake Shebeshekong, where campers forge lasting connections with nature and learn to be stewards of the land. At Hidden Bay, we focus on fostering self-reliance and confidence in a safe, respectful, and inclusive community. Campers set goals, develop leadership skills, and engage in traditional camp activities like water sports, archery, eco-adventures, games, and campfires, all while creating memories and friendships that last a lifetime.

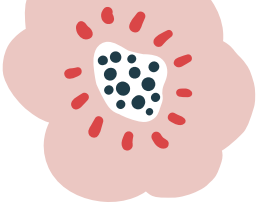


**Nature Connections** – Led by York Professional Care & Education Certified Forest & Nature School Practitioners, Nature Connections invites children, their families or caregivers to explore 48 acres of natural spaces. Mornings outdoors include hikes, play with natural materials, mud kitchen, fire building, storytelling, songs, and more. Seasonal sessions help families integrate nature into daily life, learn Forest School values, connect with a like-minded community, and build new relationships.

**Forest School Fridays** – Running September to June for children ages 3.8 to 6 years, Forest School immerses children in nature alongside peers and certified practitioners, following Forest & Nature School principles. Research shows Forest Schools boost cognitive, motor, and social skills, enhance mental well-being, and build confidence and resiliency—benefits that support academic success and deepen connection to the natural world.



# Cultural Celebration



At York Professional Care & Education, we are committed to delivering culturally responsive programming that reflects the diverse backgrounds of the children and families in our community. We create opportunities for children to explore and experience cultural traditions and practices beyond their own, nurturing respect, curiosity, and a deeper understanding of others. By integrating cultural celebrations into our programs, we support the development of an inclusive, equitable, and anti-oppressive perspective.

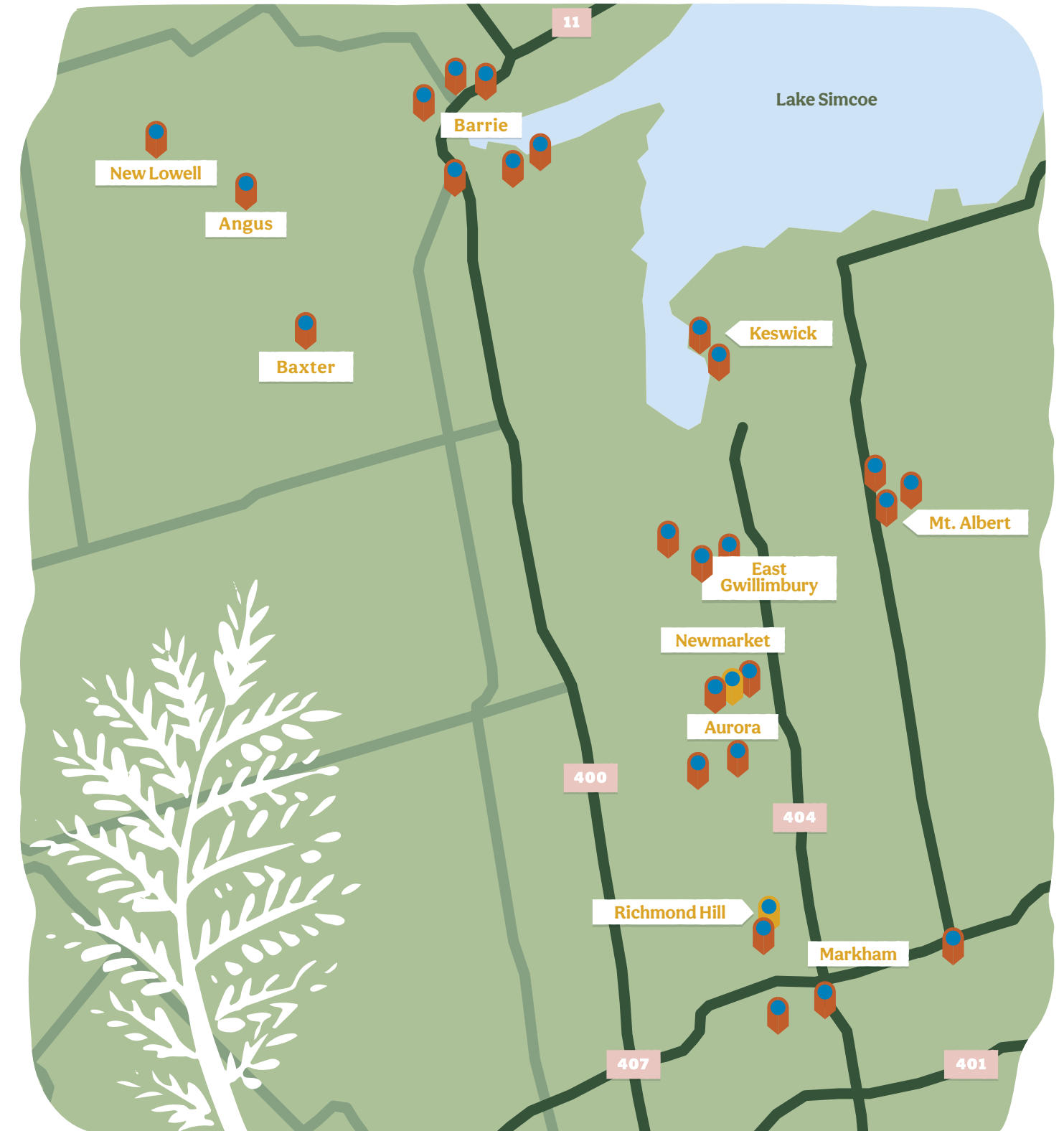


To enhance programming, educators have access to YPCE's Cultural Resource Guide. This resource offers background information on a range of cultural traditions, along with age-appropriate activities such as storybooks, crafts, and music, allowing children to participate in meaningful learning experiences. Throughout the year, celebrations include Lunar New Year, Diwali, Eid, Hanukkah, Black History Month, National Indigenous Peoples Day, and many others.

At YPCE, we also recognize the vital role of family involvement. Families are welcomed and encouraged to share their cultural traditions within our programs, enhancing belonging and strengthening our community connections. By providing educators with supportive resources and fostering strong partnerships with families, we help ensure that every child feels respected, a sense of belonging and inspired to appreciate diversity.



# Program Locations



# Program Locations

\* On-site Before & After School Program + Exploration Summer Camp

Child Care Options for Children ages 6 weeks to 16 years old at our Child Care Centres, Licensed Home Child Care, Before & After School Kids' Clubs, and Summer Camps.

\* On-site Before & After School Program  
+ Exploration Summer Camp

## Child Care Centres – York Region

<b>German Mills Child Care Centre *+</b> (German Mills Public School)	61 Simonston Blvd., <b>Thornhill</b>	905-709-3484	gm@ypce.com	2.5 to 13 yrs
<b>Holland Landing Child Care Centre *+</b> (Holland Landing Public School)	16 Holland River Blvd., <b>Holland Landing</b>	905-836-8916	hlca@ypce.com	18 mo. to 13 yrs
<b>Lester B. Pearson Child Care Centre *+</b> (Lester B. Pearson Public School)	15 Odin Crescent, <b>Aurora</b>	905-727-0450	lbp@ypce.com	18 mo. to 13 yrs
<b>Mount Albert Child Care Centre</b>	19299 Centre Street, <b>Mount Albert</b>	905-473-1106	maca@ypce.com	6 wks to 5 yrs
<b>Our Lady of Good Counsel Child Care Centre *+</b> (Our Lady of Counsel Catholic School)	801 Murrell Blvd., <b>East Gwillimbury</b>	905-478-1414	olgc@ypce.com	18 mo. to 13 yrs
<b>R.L. Graham Child Care Centre *+</b> (R.L. Graham Public School)	70 Biscayne Blvd, <b>Keswick</b>	905-535-0570	rlg@ypce.com	18 mo. to 13 yrs
<b>Sixteenth Avenue Child Care Centre *+</b> (Sixteenth Avenue Public School)	400 Sixteenth Ave., <b>Richmond Hill</b>	905-884-8588	16th@ypce.com	18 mo. to 13 yrs
<b>St. Joseph Child Care Centre *+</b> (St. Joseph Catholic School R.H.)	301 Roney Avenue, <b>Richmond Hill</b>	905-780-9857	stjoseph@ypce.com	2.5 to 13 yrs
<b>Whispering Pines Child Care Centre *</b> (Whispering Pines Public School)	377 Hartwell Way, <b>Aurora</b>	905-727-9595	wp@ypce.com	18 mo. to 13 yrs

## Child Care Centres - Simcoe County

<b>Andrew Hunter Child Care Centre *+</b> (Andrew Hunter Elementary School)	59 Lampman Lane, <b>Barrie</b>	705-739-1350	barrie@ypce.com	18 mo. to 13 yrs
<b>Hewitt's Creek Child Care Centre *+</b> (Hewitt's Creek Public School)	41 Sandringham Dr., <b>Barrie</b>	705-737-5430	hewittscreek@ypce.com	18 mo. to 13 yrs
<b>Trillium Woods Child Care Centre *+</b> (Trillium Woods Elementary School)	20 Elmbrook Dr., <b>Barrie</b>	705-728-5430	trillium@ypce.com	2.5 to 13 yrs

## Licensed Home Child Care

<b>Licensed Home Child Care in York Region</b> Full & Part Time Care	Various Locations (call or email to inquire)	905-841-1314	homechildcare@ypce.com	6 wks to 13 yrs
---	---	--------------	------------------------	-----------------

## Before & After School Care - York Region

<b>Aurora Grove Kids' Club</b> (Aurora Grove Public School)	415 Stone Road, <b>Aurora</b>	905-503-0260	kidsclub@ypce.com	JK to 13 yrs
<b>Henderson Avenue Kids' Club</b> (Henderson Avenue Public School)	66 Henderson Ave., <b>Thornhill</b>	905-884-8588	16th@ypce.com	JK to 13 yrs
<b>Lakeside Kids' Club</b> (Lakeside Public School)	213 Shorecrest Rd, <b>Keswick</b>	905-535-0570	rlg@ypce.com	JK to 13 yrs
<b>Markham Gateway Kids' Club</b> (Markham Gateway Public School)	30 Fonda Road, <b>Markham</b>	905-709-3484	gm@ypce.com	JK to 13 yrs
<b>Mount Albert Kids' Club</b> (Mount Albert Public School)	5488 Mount Albert Rd., <b>Mount Albert</b>	905-473-1106	maca@ypce.com	Grade 4 to 6
<b>Northern Lights Kids' Club</b> (Northern Lights Public School)	40 Bridgenorth Dr., <b>Aurora</b>	905-503-0260	kidsclub@ypce.com	JK to 13 yrs
<b>Park Avenue Kids' Club</b> (Park Avenue Public School)	36 Sunrise Street, <b>Holland Landing</b>	905-473-1106	maca@ypce.com	JK to 13 yrs
<b>Regency Acres Kids' Club</b> (Regency Acres Public School)	123 Murray Drive, <b>Aurora</b>	905-503-0260	kidsclub@ypce.com	JK to 13 yrs
<b>Robert Munsch Kids' Club +</b> (Robert Munsch Public School)	395 King Street East, <b>Mount Albert</b>	905-478-8797	rm@ypce.com	JK to Grade 3
<b>St. Joseph Kids' Club</b> (St. Joseph Catholic School Aurora)	2 Glass Drive, <b>Aurora</b>	905-503-0260	kidsclub@ypce.com	Grade 1 to 6

## Before & After School Care – Simcoe County

<b>Baxter Central Kids' Club</b> (Baxter Central Public School)	62 Denney Drive, <b>Egbert</b>	249-880-4096	simcoekidsclub@ypce.com	JK to 13 yrs
<b>Cundles Heights Kids' Club</b> (Cundles Heights Public School)	60 Cundles Road. E., <b>Barrie</b>	249-880-4096	simcoekidsclub@ypce.com	JK to 13 yrs
<b>Mapleview Heights Kids' Club +</b> (Mapleview Heights Elementary School)	180 Esther Drive, <b>Barrie</b>	705-737-5430	hewittscreek@ypce.com	JK to 13 yrs
<b>New Lowell Kids' Club</b> (New Lowell Central Public School)	5197 County Road 9, <b>New Lowell</b>	249-880-4096	simcoekidsclub@ypce.com	JK to 13 yrs
<b>Our Lady of Grace Kids' Club</b> (Our Lady of Grace Catholic School.)	24 Roth Street, <b>Angus</b>	249-880-4096	simcoekidsclub@ypce.com	JK to 13 yrs
<b>Steele Street Kids' Club +</b> (Steele Street Public School)	36 Steel Street, <b>Barrie</b>	705-739-1350	barrie@ypce.com	JK to 13 yrs

## Summer Camps

<b>Adventure Camp</b> (Day Camp)	19794 Highway 48, <b>Mount Albert</b>	365-537-0110	daycamp@ypce.com	5 to 13 yrs
<b>Hidden Bay Leadership Camp</b> (Day & Overnight Camp)	200 Shebeshekong Rd., <b>Nobel</b>	Winter: 365-537-0110 Summer: 705-342-7345	hiddenbay@ypce.com	*6 to 16 yrs

\*Must be 7 for overnight camp



**Address:**  
15203 Yonge Street  
Aurora, ON L4G 1L8

**Phone:**  
905-841-1314

**Email:**  
[info@ypce.com](mailto:info@ypce.com)

**Website:**  
[www.ypce.com](http://www.ypce.com)